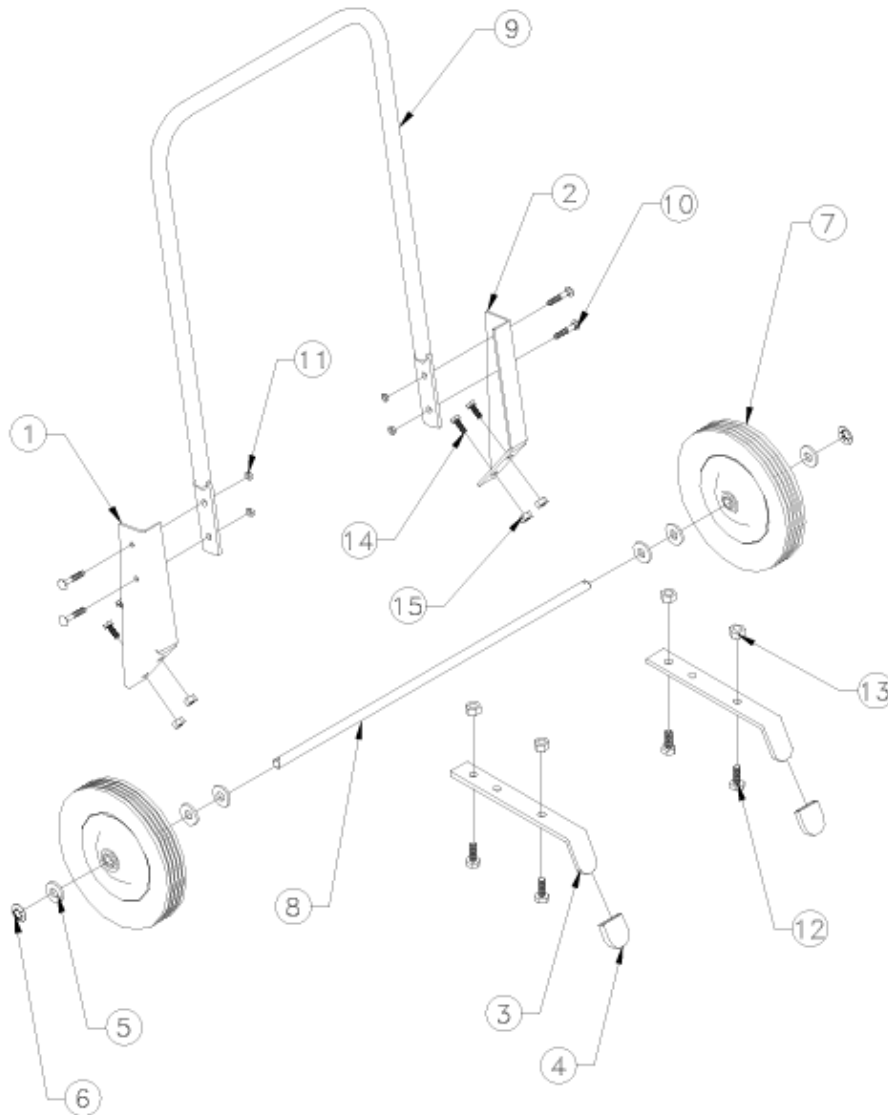


REVISIONS		PR-1175-15	
SYM.	DESCRIPTION	DATE	BY



15	4	111	NUT, LOCK, 5/16-18
14	4	312	BOLT, HEX, 5/16-18 X 3/4"
13	4	435	NUT, LOCK, 3/8-16
12	4	20016	BOLT, HEX, 3/8-16 X 1"
11	4	3859	NUT, LOCK, 1/4-20
10	4	6287	BOLT, TRUSS HD, 1/4-20 X 1"
9	1	15449	HANDLE, FORMED
8	1	15558	AXLE, WHEEL
7	2	15541	WHEEL
6	2	20692	NUT, PUSH, 1/2"
5	6	9022	WASHER, FLAT, 1/2" SAE
4	2	7435	CAP, VINYL
3	2	7434-2	BASE, LEG
2	1	7433-R	BRACKET, HANDLE, RIGHT
1	1	7433-L	BRACKET, HANDLE, LEFT

ITEM	QTY	PART NUMBER	DESCRIPTION
DRAWN:		J. SAUDER	DATE: 5/6/01
CHK:		J. KNOSALLA	DATE: 5/6/01
MAT. AS ITEMIZED			PORTABLE REEL KIT (1175-8-75) COXREELS 6720 S. CLEMENTINE CT. TEMPE, AZ 85283 480-820-6396
NEXT ASSEMBLY			
DEC.	.XX ±.010	FRACT.	
	.XXX ±.005	ANGLE	±.5 DEG.
DWG. NO.		PR-1175-15	REV. -