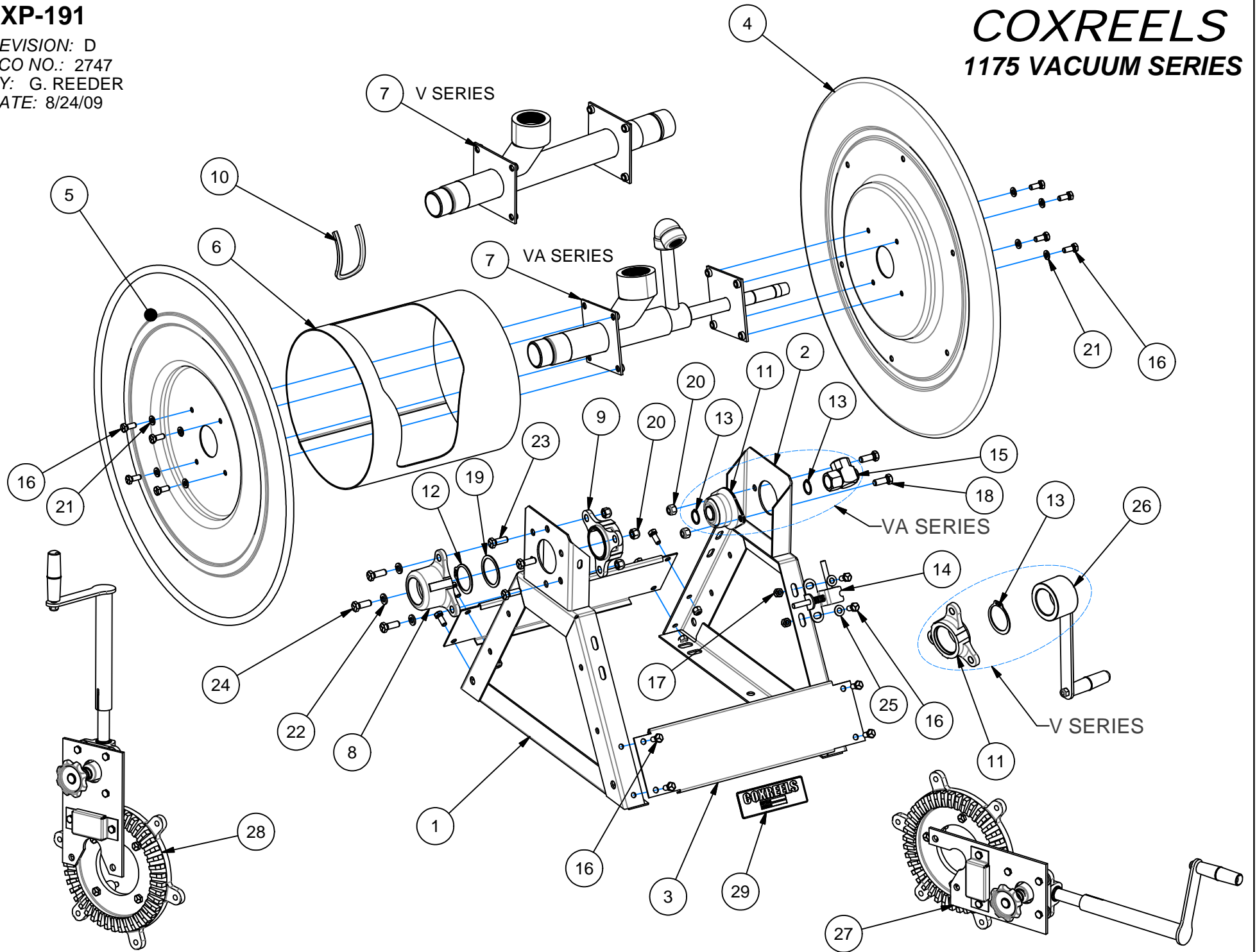


EXP-191

REVISION: D
ECO NO.: 2747
BY: G. REEDER
DATE: 8/24/09

COXREELS 1175 VACUUM SERIES



1175-8 VACUUM SERIES

ITEM NO.	PART NO.	DESCRIPTION	VA-1175-850	VA-1175-850-C	VA-1175-850-T	V-1175-850	V-1175-850-C	V-1175-850-T
1	7609	FRAME, 1 1/2" SWIVEL SIDE	1	1	1	1	1	1
2	7779	FRAME, 1/2" CRANK SIDE	1	1	1	-	-	-
	7614	FRAME, CRANK SIDE	-	-	-	1	1	1
3	20756-11.5	BOTTOM RAIL	2	2	2	2	2	2
4	7603	DISC, 24"	1	1	1	1	1	1
5	7603-1	DISC, 24"	1	1	1	1	1	1
6	7782	DRUM, CENTER	1	1	1	-	-	-
	7604-11.5	DRUM, CENTER	-	-	-	1	1	1
7	7774	AXLE ASSY 1-1/2" X 1/2"	1	1	1	-	-	-
	7909	AXLE ASSY 1-1/2"	-	-	-	1	1	1
8	20288	SWIVEL, 1-1/2", STRAIGHT	1	1	1	1	1	1
9	7622	ASSY, BEARING, 1-1/2"	1	1	1	1	1	1
10	7460-15.5	TRIM, DRUM EDGE	1	1	1	-	-	-
	7460-14	TRIM, DRUM EDGE	-	-	-	1	1	1
11	7781	BEARING, .833 DIA, 1/2" SIDE	1	1	1	-	-	-
	7622	ASSY, BEARING, 1-1/2"	-	-	-	1	1	1
12	20266	RING, RETAINING	1	1	1	1	1	1
13	153	RETAINING RING, 1/2"	2	2	2	-	-	-
	20252	RETAINING RING, 1-1/2"	-	-	-	1	1	1
14	7428	ASSY, LOCK PIN	1	1	1	1	1	1
15	439	SWIVEL, 1/2"	1	1	1	-	-	-
16	312	BOLT, 5/16-18 X 3/4" HEX	18	14	14	18	14	14
17	111	NUT, 5/16-18 NYLOCK	10	10	10	10	10	10
18	20016	BOLT, 3/8-16 X 1" HEX	2	2	2	3	3	3
19	20264	WASHER, BEARING	1	1	1	1	1	1
20	435	NUT, 3/8-16 NYLOCK	5	5	5	6	6	6
21	112	WASHER, LOCK, 5/16	8	4	4	8	4	4
22	437	WASHER, LOCK, 3/8	3	2	3	3	2	3
23	436	BOLT, 3/8-16 X 3/4" HEX	-	2	-	-	2	-
	20016	BOLT: 3/8-16 X 1" HEX	3	-	-	3	-	-
	341	BOLT: 3/8-16 X 1-1/4" HEX	-	-	3	-	-	3
24	20016	BOLT: 3/8-16 X 1" HEX	3	-	3	3	-	3
	341	BOLT: 3/8-16 X 1-1/4" HEX	-	3	-	-	3	-
25	20171	WASHER, FLAT, 5/16	2	2	2	2	2	2
26	7626	ASSY, HAND CRANK	-	-	-	1	-	-
	7624	PIPE CAP, 1-1/2"	-	-	-	-	1	1
27	7730	BEVEL GEAR KIT, FRONT CRANK	-	1	-	-	1	-
28	7731	BEVEL GEAR KIT, TOP CRANK	-	-	1	-	-	1
29	10925-5	LABEL: STANDARD PRODUCT	1	1	1	1	1	1

REVISION: D

ECO: 2747

DATE: 8/24/2009

NAME: G. REEDER