

Heavy Duty Hose Reels

SH, MP & HP SERIES

AVAILABLE IN: **SPRING DRIVEN**
EZ-COIL®

COXREELS® SH Series Super Hub™ spring driven hose reels, like the **P Series**, have a history of dependable performance. The larger chassis and frame accommodate longer lengths and larger diameters of hose. Coxreels' original Super Hub™ dual axle support system increases the stability during operation, reduces vibration and strengthens the structural integrity of the reel.

LOW PRESSURE Models with hose are for air or water service with a maximum temperature 150° F. Models less hose can be used for air, water or oil. **NOTE: Do not exceed listed hose O.D. to obtain maximum length.**

HOSE					LESS HOSE		SIZE INDEX	
MODEL	I.D.	O.D.	FT.	PSI	APRX. LBS.	MODEL		APRX. LBS.
SH-N-160	1/4"	1/2"	60	300	50	SHL-N-160	45	1
SH-N-350	3/8"	21/32"	50	300	50	SHL-N-350	44	1
SH-N-360	3/8"	21/32"	60	300	53	SHL-N-360	46	1
SH-N-375	3/8"	21/32"	75	300	68	SHL-N-375	59	5
SH-N-3100	3/8"	21/32"	100	300	71	SHL-N-3100	60	5
SH-N-435	1/2"	27/32"	35	300	49	SHL-N-435	43	2
SH-N-440	1/2"	27/32"	40	300	52	SHL-N-440	45	2
SH-N-450	1/2"	27/32"	50	300	54	SHL-N-450	46	2
SH-N-475	1/2"	27/32"	75	300	68	SHL-N-475	57	6
SH-N-4100	1/2"	27/32"	100	300	81	SHL-N-4100	66	6
SH-N-525	3/4"	19/32"	25	300	52	SHL-N-525	45	3
SHF-N-525*	3/4"	19/32"	25	300	57	SHL-N-525	45	3
SH-N-535	3/4"	19/32"	35	300	57	SHL-N-535	47	3
SH-N-550	3/4"	19/32"	50	300	69	SHL-N-550	56	7

*These models are supplied with fuel hose.

MEDIUM PRESSURE Reels are furnished with standard one wire braid hose suitable for air, water or oil applications. Hose exceeds SAE R1 specifications. Maximum temperature 250° F. **NOTE: Do not exceed listed hose O.D. to obtain maximum length.**

HOSE					LESS HOSE		SIZE INDEX	
MODEL	I.D.	O.D.	FT.	PSI	APRX. LBS.	MODEL		APRX. LBS.
N/A	-	-	-	-	-	MPDL-N-150*	62	4
MPD-N-330*	3/8"	5/8"	30	3000	78	MPDL-N-330*	62	4
MP-N-340	3/8"	5/8"	40	3000	63	MPL-N-340	53	1
MP-N-350	3/8"	5/8"	50	3000	65	MPL-N-350	53	1
MPD-N-430*	1/2"	3/4"	30	2500	79	MPDL-N-430*	62	4
MP-N-435	1/2"	3/4"	35	2500	61	MPL-N-435	51	2
MP-N-440	1/2"	3/4"	40	2500	62	MPL-N-440	51	2
MP-N-450	1/2"	3/4"	50	2500	67	MPL-N-450	53	2
MP-N-525	3/4"	1"	25	1500	61	MPL-N-525	51	2
MP-N-535	3/4"	1"	35	1500	68	MPL-N-535	54	3

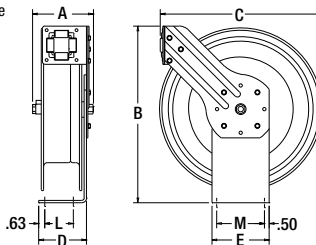
*These models are designed for dual-hydraulic hose applications. See page 24

HIGH PRESSURE Reels are furnished standard with S.A.E. 100R16 #1 or #2 wire braid hose suitable for grease and hydraulic oil applications. Maximum temp. 250° F. **NOTE: Do not exceed listed hose O.D. to obtain maximum length.**

HOSE					LESS HOSE		SIZE INDEX	
MODEL	I.D.	O.D.	FT.	PSI	APRX. LBS.	MODEL		APRX. LBS.
HP-N-140	1/4"	17/32"	40	5000	62	HPL-N-140	53	2
HP-N-150	1/4"	17/32"	50	5000	64	HPL-N-150	53	2
HP-N-160	1/4"	17/32"	60	5000	70	HPL-N-160	56	2
HP-N-335	3/8"	43/64"	35	4000	61	HPL-N-335	52	2
HP-N-340	3/8"	43/64"	40	4000	64	HPL-N-340	54	2
HP-N-350	3/8"	43/64"	50	4000	65	HPL-N-350	53	2

REEL DIMENSIONS Technical Data Sheets Available On Website

SIZE INDEX	A	B	C	D	E	MOUNT L-M
1	8 3/4"	21"	19 9/16"	6"	6"	4" - 5"
2	9 1/4"	21"	19 9/16"	6"	6"	4" - 5"
3	9 3/4"	21"	19 9/16"	6"	6"	4" - 5"
4	11 1/4"	21"	19 9/16"	6"	6"	4" - 5"
5	8 3/4"	25 1/4"	23"	6"	6"	4" - 5"
6	9 1/4"	25 1/4"	23"	6"	6"	4" - 5"
7	9 3/4"	25 1/4"	23"	6"	6"	4" - 5"



AVAILABLE OPTIONS

MOUNTING BRACKETS
ENHANCE PERFORMANCE
EASIER INSTALLATION
WALL, FLOOR & CEILING
MANY STYLES AVAILABLE
See Page 34 For Selection

UPGRADE TO EZ-COIL®
INCREASE OPERATOR SAFETY
AVOID PERSONAL INJURY
LONGER REEL LIFE
See Page 3 For More Details

HOSE UPGRADE
PROTECTION FROM THE ELEMENTS
EXTENDED HOSE LIFE
APPLICATION SPECIFIC
See Page 33 For More Details

STAINLESS STEEL
SWIVELS, PLUMBING
& CONSTRUCTION
FOR NON-CORROSIVE
PURE PRODUCT FLOW
See Page 15 For Details



GOOD VIBRATIONS? I DON'T THINK SO!

Two Support Points To The Center Shaft With Super Hub™



SH, MP & HP SERIES Offers...

- Hose I.D.:** 1/4" - 3/4" **Pressure:** To 5,000 PSI
- ✓ Dual Axle Support Points To The Center Shaft With Coxreels' Original Super Hub™ Axle Support System
 - ✓ Swivel Seals: NITRILE

SPRING DRIVEN FEATURES:

- ✓ Auto Rewind Easily Wraps, Stores & Protects Hose
- ✓ Heavy Gauge 1/4" Steel Base & Support Post
- ✓ Factory-Matched Cartridge-Style Spring Motor
- ✓ Solid Machined Brass Swivel (Zinc Plated Steel On HP Models)
- ✓ 1" Solid Steel Axle With 1" Lubricated Precision Bearings
- ✓ Guide Arm Adjusts To Wall, Floor & Overhead Positions
- ✓ Multi-Position Lock Ratchet Secures Hose At Desired Length
- ✓ Non-Corrosive Stainless Steel Spring, Pawl & Zinc Plated Ratchet

COXREELS® SIGNATURE FEATURES:

- ✓ Professional Grade Heavy Duty Steel Construction
- ✓ Durable Proprietary CPC™ Powder Coat Process
- ✓ Rolled Edges & Ribbed Discs Provide Strength & Safety
- ✓ Leading 2-Year Manufacturer's Limited Warranty
- ✓ Made In The U.S.A. Sold & Supported Worldwide

HOW TO ORDER? **NEED SPECIAL O-RINGS**
See Page 5 For Details *See Page 35 For Details*



Toll Free 800-COX-REEL • Fax 800-229-REEL • Int 480-820-6396 • Fax 480-820-5132 • www.coxreels.com

