

HOSE, CORD & CABLE REELS

Automotive

COXREELS SINCE 1923



INDUSTRY CATALOG

AUTOMOTIVE REELS



IT'S NOT JUST A LABEL,

IT'S A BADGE OF HONOR

Hose, cord, and cable reels are essential components for applications that require high product flow and/or longer hose such as general duty, automotive dealerships, and service garages. Whether you need a low, medium or high-pressure rating, for grease, oil or air and water, Coxreels offers a reel to fit the application.

The Recognized Industry Leader

Coxreels is wholesale only since 1923. Our product is made to high standards, supplying industrial grade product to distributors and OEMs worldwide. We are recognized as the leader in the reeling industry. We have been providing the most complete and diverse line of hose, cord, and cable reels for 10 decades!

The Most Complete Line of Automotive Reels in the Market

Coxreels' automotive hose reels are designed to ensure long life in the toughest environments where large hose diameters or long lengths are required for increased flow and versatility.

Possible fields of application:

- Automotive Service Centers
- Industrial Manufacturing Facilities
- Independent Repair Facilities
- Small Fast Lubes
- Public Works Garages
- Fleet Maintenance Facilities
- Lubrication Stations
- Small Maintenance Shops
- Tire Shops
- Car Dealerships
- Truck Dealers
- Racing Pit Stops

Proven Reeling Solutions to Automotive Needs!

Automotive hose reels not only make hoses last longer, they save time and allow for hassle-free maintenance. Compact design and quality steel construction are incorporated into Coxreels' diverse line of automotive reels. No matter what your application, we have a solution for you!

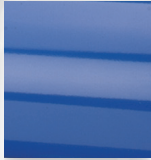
Our versatile and wide reel selection handles various capacities and comes in different sizes to suit any service vehicle requirement. Our standard reeling devices suggested in this catalog are already specified to meet the needs of the utility and service markets. Coxreels also has the engineering power to design and build custom reels, so please consult the factory if you cannot locate a reel that will work with your equipment, we will be happy to assist you with a solution.

VALUE THE DIFFERENCE...

Make COXREELS your reel choice!

PROFESSIONAL GRADE FEATURES

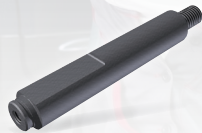
A HIGHER LEVEL OF STANDARDS



CPC™ POWDER COAT
Our blue powder coat finish is long lasting, chip resistant & rust inhibiting



BRASS SWIVEL
External fluid path, machined from solid brass, full flow, swivel for simple seal maintenance



STEEL AXLE
1" solid steel axle & lubricated bearings for extra strength & durability. Not a hollow tube & no fluid travels through it



STEEL CONSTRUCTION
High-Quality steel construction provides superior strength and durability for heavy-duty applications in commercial and industrial settings



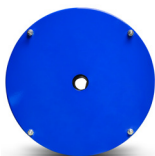
COMPONENT COVER
External CPC powder coated steel components cover for simple slip ring routine maintenance



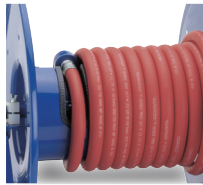
EZ-COIL® SERIES
A patented safety system that retracts up to 80% slower than conventional reels



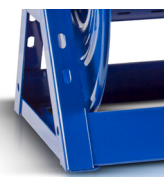
CNC SPUN DISCS
All steel rolled edges & ribbed discs for added safety, strength & durability



CARTRIDGE MOTOR
Enclosed factory tuned & matched cartridge style motor for safe & easy replacement



LOW PROFILE RISER
Low profile riser with open drum slot allows for smooth even hose wraps that will not pinch or bind your hose. **NO HUMP!**



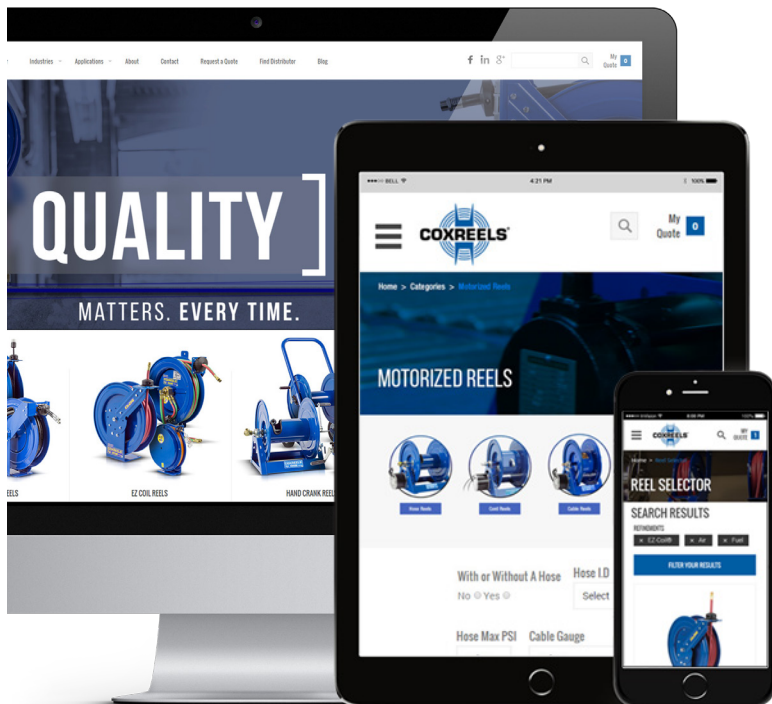
ALL WELDED STEEL "A" FRAME
All welded steel "A" frame for strength & durability. **NOT BOLTED!**



2 YEAR WARRANTY
Coxreels proudly stands behind our reels as they are built to last!



USA MADE, QUALITY & SUPPORT
We take great pride in designing, building & supplying the world's finest reels made right here in the U.S.A.



VISIT US ONLINE

Coxreels is committed to providing our customers with the ultimate online experience as they navigate through the most complete and diverse line of hose, cord, and cable reels.

We hope that you enjoy the fresh look and feel of our updated website and find that this portal serves as a valuable resource for you!

FOLLOW US



www.coxreels.com • 1.800.COX.REEL

AUTOMOTIVE **3**

1/4" - 1/2" I.D.

P SERIES PERFORMANCE HOSE REELS



COXREELS® P Series "Performance" spring driven hose reels have a long history of dependability and trouble free performance. Their compact space-saving size and heavy duty construction make them highly versatile and virtually indestructible. Time-tested proven components, superior design and craftsmanship have contributed to it's worldwide reputation as the most trusted hose reel.

SETTINGS

- Automotive Service Centers
- Industrial Manufacturing Facilities
- Independent Repair Facilities
- Small Fast Lubes
- Public Works Garages
- Lubrication Stations
- Small Maintenance Shops
- Tire Shops
- Car Dealerships
- Truck Dealers
- Fleet Maintenance Facilities

P SERIES :: REEL SPECIFICATIONS

SWIVEL

- External fluid path with machined from solid brass 90° full-flow NPT swivel inlet (Zinc plated steel swivel on HP models)
- Swivel Seals: NITRILE

DESIGN & STRUCTURE

- Sturdy single pedestal reel with space saving design facilitates workplace organization
- Guide arm adjusts to wall, floor, vehicle & overhead positions
- Solid one piece, heavy gauge 1/4" steel base & support post for maximum stability
- 1" solid steel axle & lubricated precision bearings for smooth rotation
- Controlled retraction speed up to 80% slower on EZ-COIL models
- Enclosed factory tuned & matched cartridge-style spring motor
- Non-corrosive stainless steel spring, pawl & zinc plated ratchet
- Multi-position lock ratchet mechanism secures hose at desired length

WARNING: Cancer and reproductive Harm – See page 15 for more information – www.P65Warning.ca.gov

P SERIES

Do not exceed listed hose O.D. to obtain maximum length.

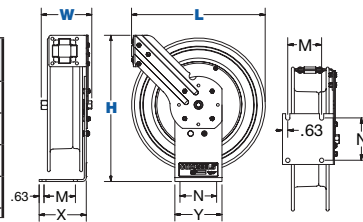
HOSE							LESS HOSE			SIZE INDEX
MODEL	I.D.	O.D.	FT.	PSI	APPR. LBS.	EZ-COIL MODELS	MODEL	APPR. LBS.		
LOW PRESSURE							Models with hose are for air water service with a maximum temperature 150°F. Models less hose can be used for air, water or oil.			
P-LP-125	1/4"	1/2"	25	300	27	EZ-P-LP-125	P-LPL-125	24	1	
P-LP-150	1/4"	1/2"	50	300	40	EZ-P-LP-150	P-LPL-150	35	3	
P-LP-325	3/8"	5/8"	25	300	28	EZ-P-LP-325	P-LPL-325	25	2	
P-LP-350	3/8"	5/8"	50	300	43	EZ-P-LP-350	P-LPL-350	36	3	
P-LP-425	1/2"	3/4"	25	300	44	-	P-LPL-425	39	4	
P-LP-450	1/2"	3/4"	50	300	48	EZ-P-LP-450	P-LPL-450	43	4	
MEDIUM PRESSURE							Reels are furnished with standard one wire braid hose suitable for air, water or oil applications. Hose exceeds SAE R1 specifications. Maximum Temperature 212°F. (If used with water, synthetic fluids 135°F max.)			
P-MP-325	3/8"	1 1/16"	25	3,000	49	-	P-MPL-325	42	4	
P-MP-425	1/2"	1 3/16"	25	2,500	49	EZ-P-MP-425	P-MPL-425	42	4	
HIGH PRESSURE							Reels are furnished standard with S.A.E. 100R16 #1 or #2 wire braid hose suitable for grease and hydraulic oil applications. Maximum Temperature 212°F. (If used with water, synthetic fluids 135°F max.)			
P-HP-125	1/4"	9/16"	25	5,000	48	EZ-P-HP-125	P-HPL-125	42	4	
P-HP-325	3/8"	1 1/16"	25	4,000	49	EZ-P-HP-325	P-HPL-325	42	4	

To order EZ-Coil® equipped models less hose, please add prefix "EZ-"

REEL DIMENSIONS

SIZE INDEX	W	H	L	X	Y	M	N
1	5 7/8"	14 7/8"	13 1/2"	5"	6"	3"	5"
2	6 1/2"	14 7/8"	13 1/2"	5"	6"	3"	5"
3	6 3/4"	18 5/8"	17 1/8"	6"	6"	4"	5"
4	7"	18 5/8"	17 1/8"	6"	6"	4"	5"

Overall Dimensions Base Mounting Pattern



Technical Data Sheets Available On Website

TOP REQUESTED UPGRADES & ACCESSORIES

SEE PAGE 14 FOR ADDITIONAL ACCESSORIES



ORDER EZ-COIL® MODELS

EZ-Coil® is a patented controlled retraction technology offered exclusively on Coxreels' Safety Series reels. It retracts up to 80% slower than conventional reels, resulting in workplace safety, protection from injury & costly property damage.

UPGRADE TO NITRILE OR RUBBER HOSE

NITRILE HOSE: Premium high quality, oil resistant, multi-purpose hose. The high tensile spiral synthetic yarn reinforcement provides excellent kink resistance. Temperature range: -20° F to +212° F.

SYNTHETIC RUBBER HOSE: Versatile general purpose hose. The synthetic rubber tube and cover resists heat, sunlight, ozone, and weathering. Temperature range -40° F to +212° F

UPGRADE TO STAINLESS STEEL SWIVEL

Based on the upgraded medium pressure swivel, the stainless steel swivel is machined from solid 316 stainless steel and features increased wall thicknesses with upgraded seals and backup rings.



UPGRADE TO SOLID ROLLERS

Heavy duty machined from solid plastic rollers.



ADD AIR TOOL KIT

BEND RESTRICTOR: Designed to limit the degree of bending without compromising the integrity of the hose assembly while also preventing the hose-end from kinking, excessive wearing, and tearing. Available for low pressure models.

QUICK DISCONNECT: Quick disconnect couplings tread onto end of hose fitting to provide fast, leak-proof connections for low pressure hose lines.



ADD BEND RESTRICTOR

Designed to limit the degree of bending without compromising the integrity of the hose assembly while also preventing the hose-end from kinking, excessive wearing, and tearing. Available for low pressure models.



COXREELS® SH Series "Super Hub™" spring driven hose reels, like the P Series, have a long history of dependable performance. The larger chassis and frame accommodate longer lengths and larger diameters of hose. Coxreels' original Super Hub™ dual axle support system increases the stability during operation, reduces vibration and strengthens the structural integrity of the reel.

SETTINGS

- Automotive Service Centers
- Vehicle Lift Systems
- Industrial Manufacturing Facilities
- Independent Repair Facilities
- Public Works Garages
- Small Maintenance Shops
- Car Dealerships
- Truck Dealers
- Fleet Maintenance Facilities

SH, MP & HP SERIES

Do not exceed listed hose O.D. to obtain maximum length.

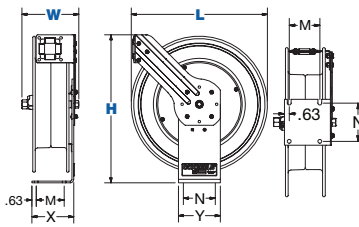
MODEL	HOSE					EZ-COIL MODELS	LESS HOSE		SIZE INDEX
	I.D.	O.D.	FT.	PSI	APRX. LBS.		MODEL	APRX. LBS.	
LOW PRESSURE Models with hose are for air water service with a maximum temperature 150°F. Models less hose can be used for air, water or oil.									
SH-N-350	3/8"	5/8"	50	300	50	EZ-SH-350	SHL-N-350	44	1
SH-N-3100	3/8"	5/8"	100	300	71	EZ-SH-3100	SHL-N-3100	60	2
SH-N-450	1/2"	3/4"	50	300	54	EZ-SH-450	SHL-N-450	46	1
SH-N-4100	1/2"	3/4"	100	300	81	EZ-SH-4100	SHL-N-4100	66	3
MEDIUM PRESSURE Reels are furnished with standard one wire braid hose suitable for air, water or oil applications. Hose exceeds SAE R1 specifications. Maximum Temperature 250°F.									
MP-N-350	3/8"	1 1/16"	50	3,000	65	EZ-MP-350	MPL-N-350	53	1
MP-N-450	1/2"	1 3/16"	50	2,500	67	EZ-MP-450	MPL-N-450	53	4
HIGH PRESSURE Reels are furnished standard with S.A.E. 100R16 #1 or #2 wire braid hose suitable for grease and hydraulic oil applications. Maximum Temperature 250°F.									
HP-N-150	1/4"	9/16"	50	5,000	64	EZ-HP-150	HPL-N-150	53	4
HP-N-350	3/8"	1 1/16"	50	4,000	65	EZ-HP-350	HPL-N-350	53	5

To order EZ-Coil® equipped models less hose, please add prefix "EZ-"

REEL DIMENSIONS

SIZE INDEX	W	H	L	X	Y	M	N
1	8 1/4"	21 1/4"	19 1/2"	6"	6"	4"	5"
2	8 1/4"	25 1/2"	24"	6"	6"	4"	5"
3	8 3/4"	25 1/2"	24"	6"	6"	4"	5"
4	8 3/4"	21 1/4"	19 1/2"	6"	6"	4"	5"
5	9 1/4"	21 1/4"	19 1/2"	6"	6"	4"	5"

Overall Dimensions Base Mounting Pattern



Technical Data Sheets Available On Website



Double axle support with Super Hub™

SH, MP & HP SERIES :: REEL SPECIFICATIONS

SWIVEL

- External fluid path with machined from solid brass 90° full-flow NPT swivel inlet (Zinc plated steel swivel on HP models)
- Swivel Seals: NITRILE

DESIGN & STRUCTURE

- Sturdy single pedestal reel features Coxreels' exclusive Super Hub™ dual axle support system
- Guide arm adjusts to wall, floor, vehicle & overhead positions
- Solid one piece, heavy gauge 1/4" steel base & support post for maximum stability
- 1" solid steel axle & lubricated precision bearings for smooth rotation
- Controlled retraction speed up to 80% slower on EZ-COIL models
- Enclosed factory tuned & matched cartridge-style spring motor
- Non-corrosive stainless steel spring, pawl & zinc plated ratchet
- Multi-position lock ratchet mechanism secures hose at desired length



WARNING: Cancer and reproductive Harm – See page 15 for more information – www.P65Warning.ca.gov

SEE PAGE 14 FOR ADDITIONAL ACCESSORIES

TOP REQUESTED UPGRADES & ACCESSORIES



ORDER EZ-COIL® MODELS

EZ-Coil® is a patented controlled retraction technology offered exclusively on Coxreels' Safety Series reels. It retracts up to 80% slower than conventional reels, resulting in workplace safety, protection from injury & costly property damage.

UPGRADE TO NITRILE OR RUBBER HOSE

NITRILE HOSE: Premium high quality, oil resistant, multi-purpose hose. The high tensile spiral synthetic yarn reinforcement provides excellent kink resistance. Temperature range: -20° F to +212° F.

SYNTHETIC RUBBER HOSE: Versatile general purpose hose. The synthetic rubber tube and cover resists heat, sunlight, ozone, and weathering. Temperature range -40° F to +212° F.

UPGRADE TO STAINLESS STEEL SWIVEL

Based on the upgraded medium pressure swivel, the stainless steel swivel is machined from solid 316 stainless steel and features increased wall thicknesses with upgraded seals and backup rings.



UPGRADE TO SOLID ROLLERS

Heavy duty machined from solid plastic rollers.



ADD AIR TOOL KIT

BEND RESTRICTOR: Designed to limit the degree of bending without compromising the integrity of the hose assembly while also preventing the hose-end from kinking, excessive wearing, and tearing. Available for low pressure models.

QUICK DISCONNECT: Quick disconnect couplings tread onto end of hose fitting to provide fast, leak-proof connections for low pressure hose lines.

ADD BEND RESTRICTOR

Designed to limit the degree of bending without compromising the integrity of the hose assembly while also preventing the hose-end from kinking, excessive wearing, and tearing. Available for low pressure models.



COXREELS® SHW Series spring driven "Welding" hose reels are the ideal solution for managing bulky twin line welding hose. The SHW Series has a larger chassis and frame to accommodate longer lengths of welding hose and Coxreels' original Super Hub dual axle support system for increased stability during operation, less vibration and greater structural integrity.

SETTINGS

- Automotive Service Centers
- Car Dealerships
- Industrial Manufacturing Facilities
- Welding Shops
- Truck Dealers
- Fleet Maintenance Facilities
- Independent Repair Facilities

SHW SERIES

Do not exceed listed hose O.D. to obtain maximum length.

HOSE						LESS HOSE		SIZE INDEX
MODEL	I.D.	FT.	PSI	APRX. LBS.	EZ-COIL MODELS	MODEL	APRX. LBS.	
OXYGEN-ACETYLENE <small>Hose supplied on reel is twin-siemese type meeting R.M.A. and C.G.A. type V.D. grade R specifications. Use of other types of hose is not recommended.</small>								
P-W-125	1/4"	25	200	46	EZ-P-W-125	P-WL-125†	39	1
P-W-135	1/4"	35	200	48	-	P-WL-135†	40	1
P-W-140	1/4"	40	200	51	-	P-WL-140†	42	1
SHW-N-150	1/4"	50	200	64	EZ-SHW-150	SHWL-N-150†	52	2
SHW-N-175	1/4"	75	200	80	EZ-SHW-175	SHWL-N-175†	63	3
SHW-N-1100	1/4"	100	200	84	EZ-SHW-1100	SHWL-N-1100	62	3
OTHER FUELS <small>Hose supplied on reel is twin-siemese type grade "T." Grade "T" reels and hoses are used for a wide variety of gases, such as MAPP, propane, natural and fuel.</small>								
P-WT-125	1/4"	25	200	46	EZ-P-WT-125	P-WTL-125†	39	1
SHWT-N-150	1/4"	50	200	64	EZ-SHWT-150	SHWTL-N-150†	52	2
SHWT-N-175	1/4"	75	200	80	EZ-SHWT-175	SHWTL-N-175†	63	3
SHWT-N-1100	1/4"	100	200	84	EZ-SHWT-1100	SHWTL-N-1100	62	3

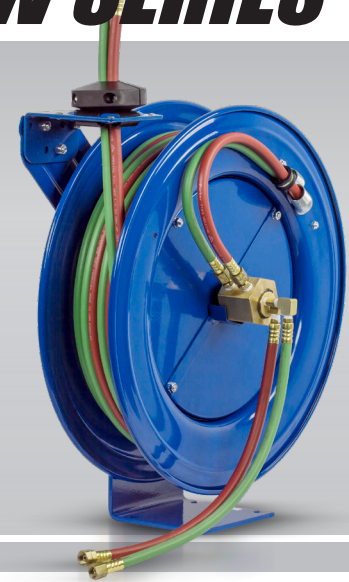
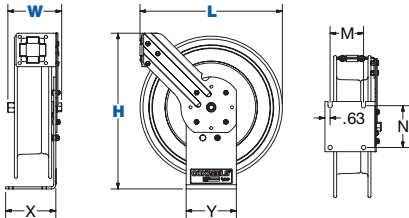
To order EZ-Coil® equipped models less hose, please add prefix "EZ-". Less hose models comes with inlet hose

REEL DIMENSIONS

Technical Data Sheets Available On Website

SIZE INDEX	W	H	L	X	Y	M	N
1	8 1/2"	18 5/8"	17"	6"	6"	4"	5"
2	10 1/4"	21 1/4"	19 1/2"	6"	6"	4"	5"
3	10 1/4"	25 1/2"	24"	6"	6"	4"	5"

Overall Dimensions Base Mounting Pattern



SHW SERIES :: REEL SPECIFICATIONS

SWIVEL

- External fluid path with 90° full-flow dual ported brass swivel offering both connections from the same side of the reel
- Swivel lock bracket ensures maximum safety
- Swivel Seals: VITON®

DESIGN & STRUCTURE

- Designed for Oxy-Acetylene or "T" grade welding hose
- Single pedestal reel with space saving design facilitates workplace organization
- Guide arm adjusts to wall, floor & overhead positions
- Solid one piece, heavy gauge 1/4" steel base & support post for maximum stability
- 1" solid steel axle & lubricated precision bearings for smooth rotation
- Coxreels' exclusive Super Hub™ dual axle support system on models with size index #2 & #3
- Controlled retraction speed up to 80% slower on EZ-COIL models
- Enclosed factory tuned & matched cartridge-style spring motor
- Non corrosive stainless steel spring, pawl & zinc plated ratchet
- Multi-position non-sparking lock ratchet mechanism secures hose at desired length



WARNING: Cancer and reproductive Harm – See page 15 for more information – www.P65Warning.ca.gov

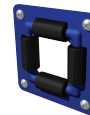
TOP REQUESTED UPGRADES & ACCESSORIES

SEE PAGE 14 FOR ADDITIONAL ACCESSORIES



ORDER EZ-COIL® MODELS

EZ-Coil® is a patented controlled retraction technology offered exclusively on Coxreels' Safety Series reels. It retracts up to 80% slower than conventional reels, resulting in workplace safety, protection from injury & costly property damage.



4-WAY ROLLER BRACKET

Heavy gauge steel, powder coated Coxreels blue (4RB). Weight: 1 lbs.

1/4" - 3/8" I.D.
12GA - 16GA

LG & PC¹⁰ SERIES

COMPACT BENCH HOSE &
CORD SPRING DRIVEN REELS



COXREELS® LG Series "Little Giant" is the first lightweight - heavy duty reel on the market. The LG is perfect for commercial or industrial applications where space or budget is limited. It is extremely lightweight and compact and can install almost anywhere. This little giant can accept either a 1/4" or 3/8" hose to tackle the jobs of reels almost double its size.

COXREELS® PC¹⁰ Series Power-Cord Series is a unique compact addition to our original line of power cord and light reels. This ground-breaking design sets a new bar as the ideal cord management solution capable of fulfilling any commercial or industrial application where space is limited.

SETTINGS

- Bench Mount
- Automotive Service Centers
- Independent Repair Facilities
- Small Maintenance Shops
- Fleet Maintenance Facilities

LG SERIES

Do not exceed listed hose O.D. to obtain maximum length.

HOSE						LESS HOSE		SIZE INDEX
MODEL	I.D.	O.D.	FT.	PSI	APRX. LBS.	MODEL	APRX. LBS.	
LOW PRESSURE Models with hose are for air water service with a maximum temperature 150°F. Models less hose can be used for air, water or oil.								
LG-LP-115	1/4"	1/2"	15	300	9	LG-LPL-115	8	1
LG-LP-125	1/4"	1/2"	25	300	11	LG-LPL-125	8	1
LG-LP-310	3/8"	5/8"	10	300	9	LG-LPL-310	8	1
LG-LP-320	3/8"	5/8"	20	300	11	LG-LPL-320	8	1

LG & PC¹⁰ SERIES :: REEL SPECIFICATIONS

LG SWIVEL

- External fluid path with machined from solid brass 90° full-flow NPT swivel
- Swivel Seals: NITRILE

PC¹⁰ SLIP RING

- External heavy gauge CPC™ powder coated steel components cover for simple slip ring routine maintenance
- Electrical current runs through a 25AMP / 600V rated slip ring
- Include 5' lead cable & grounding plug (except on less cord models)

DESIGN & STRUCTURE

- Compact & lightweight spring driven hose reel save space & facilitate workplace organization
- CoxComposite™ grommet with continuous radius design that does not pinch or catch the hose during operation
- Solid one piece, 12GA steel base & support post for maximum stability
- 1/2" solid steel axle & lubricated precision bearings for smooth rotation
- (On LG models) Designed for lightweight PVC hose & tubing
- Enclosed factory tuned & matched cartridge-style spring motor
- Non-corrosive CoxComposite™ ratchet hub with self lubricating bronze bearings secures hose at desired length

WARNING: Cancer and reproductive Harm – See page 15 for more information – www.P65Warning.ca.gov

PC¹⁰ SERIES

Receptacle End Plug End

CORD									
MODEL	ACCESSORY	INLET OUTLET	AWG / NO COND.	CORD FT.	TYPE	VOLTS	AMPS	APRX. LBS.	SIZE INDEX
FOR INDOOR USE ONLY! All models rated at 115 volts, 60 hz single phase only.									
PC10-3016-A†	Single Industrial Receptacle†		16 / 3	30	SJO	115	13	14	2
PC10-3012-A†	Single Industrial Receptacle†		12 / 3	30	SJO	115	20	17	2
PC10-3012-B†	Quad "4 Plug" Industrial Receptacle†		12 / 3	30	SJO	115	20	18	2
PC10-3016-F†	Duplex G.F.C.I. Metal Industrial Receptacle†		16 / 3	30	SJO	115	13	16	2
PC10-3012-F†			12 / 3	30	SJO	115	20	19	2
PC10-3016-X	With Cord, Less Accessory		16 / 3	30	SJO	300	13	14	2
PC10-3012-X			12 / 3	30	SJO	300	20	18	2

REEL DIMENSIONS

Technical Data Sheets Available On Website

SIZE INDEX	W	H	L	X	Y	M	N
1	5 1/4"	10 5/8"	10 1/2"	4 11/16"	8 3/8"	2 1/2"	6"
2	7 3/8"	10 5/8"	10 1/2"	4 5/8"	8 3/8"	2 1/2"	6"

Overall Dimensions Base Mounting Pattern

TOP REQUESTED UPGRADES & ACCESSORIES

SEE PAGE 14 FOR ADDITIONAL ACCESSORIES



LG- ADD BEND RESTRICTOR

Designed to limit the degree of bending without compromising the integrity of the hose assembly while also preventing the hose-end from kinking, excessive wearing, and tearing.



LG- UPGRADE TO NITRILE OR RUBBER HOSE

NITRILE HOSE: Premium high quality, oil resistant, multi-purpose hose. The high tensile spiral synthetic yarn reinforcement provides excellent kink resistance. Temperature range: -20° F to +212° F.

SYNTHETIC RUBBER HOSE: Versatile general purpose hose. The synthetic rubber tube and cover resists heat, sunlight, ozone, and weathering. Temperature range -40° F to +212° F



ORDER LIGHT MODELS

- E SUFFIX: Caged drop light with tool tap plug.
- H SUFFIX: Industrial duty LED light 6X 3W H0
- K SUFFIX: Industrial duty LED light 12X 1W SMD
- M SUFFIX: Industrial duty LED light 8W COB



4" - 6" I.D.

300 SERIES

SPRING DRIVEN EXHAUST REELS



COXREELS® 300 Series "Exhaust" spring driven reels are there to provide ventilation where necessary. This heavy duty frame was built to provide strength, stability and durability. The 300 Series reels have features found on many of our reels like spun discs, welded steel frame and enclosed cartridge motor. These reels also feature an easy access panel to have access to the main drum with internal ducting included, making it ready to go.

SETTINGS

- Automotive Service Centers
- Independent Repair Facilities
- Car Dealerships
- Industrial
- Public Works Garages
- Truck Dealers
- Manufacturing Facilities
- Small Maintenance Shops
- Fleet Maintenance Facilities

300 SERIES :: REEL SPECIFICATIONS

DESIGN

- Exhaust hose reel designed to enable the extraction of exhaust fumes directly from the source of their emission & maintain safer shop air quality.
- 6" exhaust ductwork on all models
- For floor, wall & overhead mounting applications
- Easy access panel to the drum for convenient routine maintenance
- Hose guide rail
- Internal ducting is included

STRUCTURE

- Reel features an all welded steel frame, no bolts, for strength & durability
- Drum mounted hose guide
- Enclosed factory tuned & matched cartridge-style spring motor
- Cast iron lock ring with non-sparking bronze pawl
- Multi-position lock ratchet mechanism secures hose at desired length.

EXHAUST REELS

LESS HOSE				SIZE INDEX
MODEL	I.D.	LENGTH	APRX. LBS.	
319-424	4"	24' Capacity	103	1
328-440	4"	40' Capacity	115	2
319-520	5"	20' Capacity	103	1
328-532	5"	32' Capacity	115	2
332-536	5"	36' Capacity	121	3
319-620	6"	20' Capacity	105	1
328-632	6"	32' Capacity	117	2
332-636	6"	36' Capacity	123	3

Capacities above are based on 6-8 feet of overall hose length hanging off of the reel.

REEL DIMENSIONS

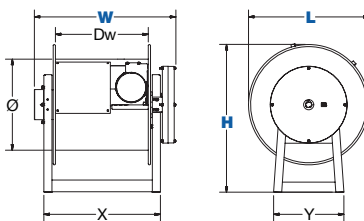
Technical Data Sheets Available On Website

SIZE INDEX	W	H	L	X	Y	Ø	Dw
1	28 1/4"	29 1/2"	24"	23 1/4"	14"	18"	19"
2	37 1/4"	29 1/2"	24"	32 1/4"	14"	18"	28"
3	41 1/4"	29 1/2"	24"	36 1/4"	14"	18"	32"

Overall Dimensions

Base

Drum



WARNING: Cancer and reproductive Harm – See page 15 for more information – www.P65Warning.ca.gov

COXREELS® 300 FEATURES

Easy Access Panel

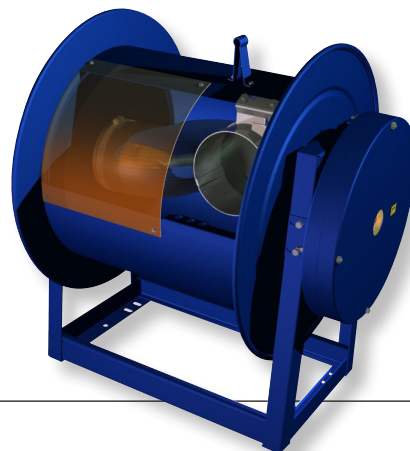
- An easy to remove panel allows full access to the drum

All Welded Steel Frame

- An all welded steel frame for strength, durability, stability & to prevent tip-overs

PERFECT FOR:

- Repair Centers
- Fire Stations
- Service Station
- Smog Stations
- Emergency Crews



COXREELS® CM Series "Caddy Mount" and DM Series "Dolly Mount" hand crank hose reels offer lightweight, compact portability for long lengths of hose.

Eliminate the task of manually coiling and uncoiling hose and easily transport it to the job site on wheels. High pressure applications are no problem with a 4,000 PSI rating. Also, a 4" inlet hose with 3/4" female fitting and male garden adaptor is available with this series for use with garden hose. See options below.

SETTINGS

- Automotive Service Centers
- Industrial Manufacturing Facilities
- Independent Repair Facilities
- Public Works Garages
- Small Maintenance Shops
- Truck Dealers
- Fleet Maintenance Facilities



PORTABLE HOSE REELS SERIES

- ALL REELS SUPPLIED LESS HOSE

MODEL	STANDARD CAPACITY			OPTIONAL CAPACITY Reducer Required			PSI	APRX LBS.	SIZE INDEX
	I.D.	O.D.	FT.	I.D.	O.D.	FT.			
CM SERIES - CADDY MOUNT									
112-3-100-CM	3/8"	5/8"	100	1/4"	1/2"	150	4,000	18	1
112-3-150-CM	3/8"	5/8"	150	1/4"	1/2"	225	4,000	22	2
117-4-225-CM	1/2"	7/8"	225	3/8"	3/4"	315	4,000	28	3
DM SERIES - DOLLY MOUNT									
117-3-200-DM	3/8"	5/8"	200	1/4"	1/2"	350	4,000	37	4
117-4-225-DM	1/2"	7/8"	225	3/8"	3/4"	315	4,000	39	5

CM & DM SERIES :: REEL SPECIFICATIONS

SWIVEL

- Machined solid brass 90° full-flow NPT swivel inlet
- Up to 4,000 PSI working pressure
- Swivel Seals: NITRILE

CM SERIES DESIGN & STRUCTURE

- High quality one piece 1" steel tube frame structure
- Hose Control bar prevents hose from slipping off the discs
- Adjustable tension brake to prevent "free-wheeling"
- Base has holes for temporary or permanent installation

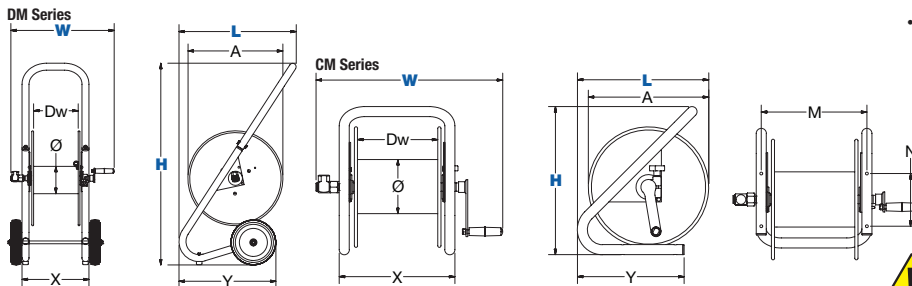
DM SERIES DESIGN & STRUCTURE

- High quality three piece 1 1/4" steel tube frame structure
- Solid 8" rubber tires for easy transport
- Rubber front feet prevent reel from slipping forward
- Removable handle allow for compact storage
- Adjustable tension brake to prevent "free-wheeling"
- Direct hand crank rewind

REEL DIMENSIONS Technical Data Sheets Available On Website

SIZE INDEX	W	H	L	X	Y	M	N	Ø	Dw
1	18 1/2"	14 3/4"	13 1/8"	11 1/2"	10 5/8"	10 1/2"	5 1/4"	5 1/2"	8"
2	23"	14 3/4"	13 1/8"	16"	10 1/2"	10 1/2"	5 1/4"	5 1/2"	12 1/2"
3	23"	18 1/2"	18"	16"	12 5/8"	10 1/2"	5 1/4"	5 1/2"	12 1/2"
4	19"	36 1/4"	21"	12"	17 1/2"	-	-	5 1/2"	8"
5	23 1/2"	36 1/4"	21"	16 1/2"	17 1/2"	-	-	5 1/2"	12 1/2"

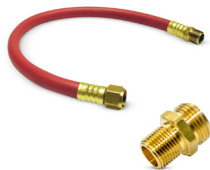
Overall Dimensions Base Mounting Pattern Drum



WARNING: Cancer and reproductive Harm – See page 15 for more information – www.P65Warning.ca.gov

SEE PAGE 14 FOR ADDITIONAL ACCESSORIES

TOP REQUESTED UPGRADES & ACCESSORIES



GARDEN HOSE KIT

You are able to connect any hose to a reel with 1/2" plumbing. You will be able to use any garden hose for everything from watering plants to washing your car. Kit includes: NPT to garden hose adaptor & adaptor hose.



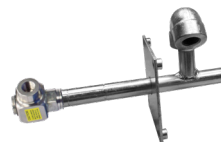
UPGRADE TO CAPTIVE BEARING SWIVEL

Featuring heavy duty ball bearings for smooth rotation and increased side load capabilities, our captive bearing swivel options are available in several seal configurations and material choices and can be factory installed on all of our hand crank and motorized reels lines. Also available in 304 stainless steel.



UPGRADE TO STAINLESS STEEL SWIVEL

Based on the upgraded medium pressure swivel, the stainless steel swivel is machined from solid 316 stainless steel and features increased wall thicknesses with upgraded seals and backup rings.



UPGRADE TO STAINLESS STEEL FLUID PATH

This options uses the same swivel as described in the stainless steel swivel upgrade and couples it to a upgraded 304 stainless steel plumbing axle to improve the corrosion resistance of the entire fluid path.



COXREELS® V Series spring driven and hand crank vacuum hose reels are available in both vacuum only and vacuum/pneumatic combinations. Both are designed to extract unwanted fumes, particles and by-products from your work area. The vacuum/pneumatic models have dual plumbing for vacuum extraction while simultaneously powering pneumatic tools such as grinders and sanders in an enclosed efficient system.

SETTINGS

- Automotive Service Centers
- Independent Repair Facilities
- Car Dealerships
- Industrial
- Public Works Garages
- Truck Dealers
- Manufacturing Facilities
- Small Maintenance Shops
- Fleet Maintenance Facilities

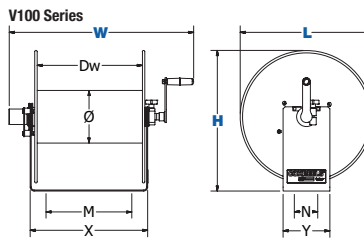
V SERIES

MODEL	DESCRIPTION	HOSE				LESS HOSE		SIZE INDEX
		VACUUM			APPR. LBS.	MODEL	APPR. LBS.	
		INLET	CAP.	VAC. HP				
V100 SERIES								
V-112H-730	Vacuum Only, Direct Crank	1 1/2" - 2" Cuff	30' of 1 1/4" Vac hose	Less than 5HP	24	V-112-730	19	1
V-117H-835	Vacuum Only, Direct Crank	1 1/2" - 2" Cuff	35' of 1 1/2" Vac hose	Less than 5HP	35	-	-	2
V-117H-850	Vacuum Only, Direct Crank	1 1/2" - 2" Cuff	50' of 1 1/2" Vac hose	5HP or more	38	V-117-850	30	2

REEL DIMENSIONS

Technical Data Sheets Available On Website

SIZE INDEX	W	H	L	X	Y	Ø	Dw
1	23 5/8"	18"	17"	15"	6"	6 3/4"	13 1/2"
	Overall Dimensions			Base		Drum	

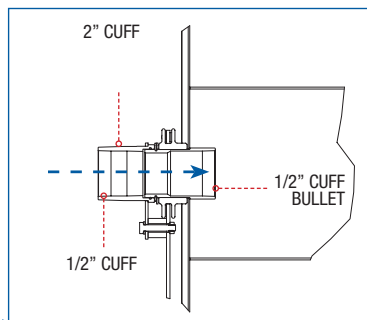
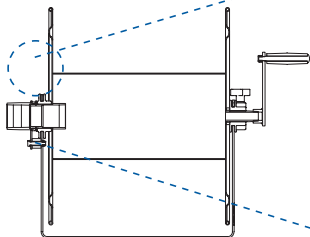


V-100 SERIES :: REEL SPECIFICATIONS

DESIGN & STRUCTURE

- Solid one piece, heavy gauge steel "U" shaped frame design
- Lightweight & compact design makes this reel the ideal solution for commercial vacuum systems
- Direct connect port for vacuum hose with bullet cuffs
- Adjustable tension brake to prevent "free-wheeling" during operation, transport or storage
- Swivel allows for the connection of 1 1/2" and 2" hose on the inlet.
- Open drum design for no hassle hose wrap.
- Direct hand crank rewind.

WARNING: Cancer and reproductive Harm – See page 15 for more information – www.P65Warning.ca.gov



SWIVEL

The upgraded swivel allows for the connection of 2" hose on the inlet in addition to the 1.5" hose.

TOP REQUESTED UPGRADES & ACCESSORIES

SEE PAGE 14 FOR ADDITIONAL ACCESSORIES






ADD PINLOCK

The spring-loaded lock pin assembly is designed to lock & secure the reel, even in mobile conditions over rough terrain.

ACCESSORIES

MOUNTING & ROLLER BRACKETS

	PART NO.	REEL SERIES					
		P	SH, MP & HP	C	PC	P-W & SHW	Alumi-Pro® Nitro-Pro®
 <p>Swing Bracket For vertical surface mounting, allows reel to swing 180°. Powder coated crinkle black 1/4" steel. Weight: 5 lbs.</p>	15720	•	•		•	•	•
	15725			•			
 <p>Swivel Bracket For horizontal surface mounting, ball bearing rotation, allows reel to swivel 345°. Powder coated crinkle black heavy gauge steel. Weight: 6 lbs. NOT FOR USE IN CEILING APPLICATIONS.</p>	15721	•	•	•	•	•	•
	15723	•	•	•	•	•	•
 <p>EZ-Up Bracket Reel easily slides in & out for easy overhead mounting. Use as an alternative to the #MR-1. Must be ordered with #15724 for "I" or "H" beam installations. Weight: 6.5 lbs.</p>	15723	•	•	•	•	•	•

MOUNTING & ROLLER BRACKETS

	PART NO.	REEL SERIES					
		P	SH, MP & HP	C	PC	P-W & SHW	Alumi-Pro® Nitro-Pro®
 <p>EZ-Up "I" or "H" Beam Adapter Must be ordered with #15723. Powder coated crinkle black, all steel construction. Weight: 5 lbs.</p>	15724	•	•	•	•	•	•
 <p>Mounting Bracket For overhead mounting, fits 3" to 8 1/2" flange on "I" or "H" beam. Powder coated crinkle black 3/16" bent steel. Weight: 13 lbs.</p>	MR-1	•	•		•	•	•
	MRT-1			•			
 <p>4-Way Roller Bracket Heavy gauge steel, powder coated Coxreels blue (4RB) Available in stainless steel (4RB-SS). Weight: 1 lbs.</p>	4RB 1/4"-3/4"	•	•	•	•	•	•
	4RB-SS 1/4"-3/4"	•	•	•	•	•	•

CUSTOMIZE YOUR REEL FROM CONCEPT TO COMPLETION








CUSTOMIZE YOUR REEL WITH COXREELS CUSTOM PRODUCTS:

Our engineering capabilities and manufacturing processes allow us to design and build top quality products for any conceivable application where reels are needed.

- Customize fluid paths/axes or create custom brackets, mounts, and accessories.
- Integrate with your specific hardware, systems, or devices.
- Modify drums, add divider disks, manipulate openings, or integrate hose handling devices.
- Combine features of various reel model lines, creating your own hybrid reel.
- Create custom retraction systems.
- Increase temperature and pressure capabilities, or multiply fluid paths.
- The possibilities are only limited by your imagination!

POWDER COAT OPTIONS*

3 digit suffix for spring driven or 4 digit suffix for hand crank & motorized models.

			
-BXX or -BXXX Blue	-RXX or -RXXX Red	-GXX or -GXXX Gray	
			
-KXX or -KXXX Gloss Black	-CXX or -CXXX Crinkle Black	-WXX or -WXXX White	-NXX or -NXXX Green

*Minimum quantity & or dollar amount may apply



EZ-COIL®

SAFETY REWIND SYSTEM

EZ-Coil® is a patented controlled retraction technology offered exclusively on Coxreels' Safety Series reels. EZ-Coil® retracts up to 80% slower than conventional reels, resulting in workplace safety, protection from injury & costly property damage.

NOBODY SHOULD BE WITHOUT EZ-COIL®!

up to **80% Slower Retraction**

	Conventional SPRING DRIVEN REELS	COXREELS EZ-COIL
SPEED	25 ft./sec.	5 ft./sec.
WHIPPING	5-15 ft.	1 ft.
IMPACT	500 ft./lbs.	0-1 ft./lbs.

Based on an independent evaluation performed by COXREELS. Depending on certain conditions, results may vary.



2 YEAR WARRANTY

Products manufactured by Coxreels are warranted for a period of two years from the date of sale to original purchaser. If within such warranty period any such equipment is proved, to Coxreels' satisfaction, to be defective, Coxreels shall be liable for the repair or, at Coxreels' option, replacement when the product is returned, freight prepaid, to Coxreels' plant or a Coxreels' service dealer. Coxreels' obligation hereunder shall be confined to such repair or replacement and shall be further conditioned upon Coxreels receiving written notice of any alleged defect within ten days after its discovery. Coxreels assumes no responsibility for improper choice of models or where products are used in excess of rated capacities and design functions, or under abnormal conditions. We make available a free engineering service to help with any product selection, application or problem.

Warranty is void if the product or any part thereof has been tampered with, altered, or repaired by other than authorized service personnel. Coxreels' responsibility ceases upon delivery to any common carrier, and we do not, unless previously instructed, insure shipments beyond point of delivery to such carrier. Any products, components or accessories that are not manufactured by Coxreels and are supplied by other manufacturers are subject to their respective guarantees or warranties. Certain products will carry their own warranties. Equipment specially built to customers' specifications and requirements is not subject to cancellation nor returnable for credit under any condition. We reserve the right to modify or alter materials, dimensions, design and construction, when necessary, to improve performance.

RETURN POLICY

No material will be accepted for return without written authorization by the factory, and a return goods authorization number assigned. Materials must be returned prepaid. A 20% restocking fee and a \$5.00 repacking charge normally applies. No material will be accepted for a credit after one year from the date of purchase. Custom products and special orders are not returnable.

STATEMENT OF HOSE APPLICATIONS

Coxreels does not manufacture any hose. All hose supplied by Coxreels is selected from reliable commercial sources and is recommended for application on the basis of data supplied by the manufacturer. Coxreels assumes no responsibility for any other application or use. Hose supplied by Coxreels carries the warranty as listed by the manufacturer (90 days).

TERMS

- Net 30 days on approved credit
- Minimum billing \$25.00
- Service charge 1 1/2% on past due accounts

FREIGHT

- F.O.B. Factory
- Our responsibility ceases upon delivery to common carrier. Consignee must file claim for shortage and damaged freight with the carrier.

DELIVERY

- Most standard items are shipped in five - ten business days or less. Consult customer service for availability.



Coxreels' Customer Service - 1.800.269.7335

Call and request a Returned Merchandise Authorization# (RMA #). Warranty claims must be made by authorized Coxreels distributors. Be prepared to give the following information: product model number, serial number and purchase invoice number.

- Replacement parts ordered will be invoiced to your account.
- Once given an RMA #, you must write it on all boxes and paperwork. Coxreels will not accept your return without an RMA #.
- Upon receiving the return, if it is determined to be covered under warranty, a credit memo will be issued and mailed to you for your records.



PLEASE REVIEW ALL SAFETY INFORMATION BEFORE CHOOSING AND USING ALL EQUIPMENT

SERIOUS INJURY, DEATH AND DESTRUCTION OF PROPERTY can result from improper selection or improper use of products described in this catalog. Since COXREELS has no control over the number and variety of applications for which its products may be purchased or the conditions under which they may be used, COXREELS liability on any claim, whether in contract, tort (including negligence), or otherwise, for any loss or damage shall in no case exceed the price paid for product or any part thereof which give rise to claim. However, the general information contained herein shall allow the customer to select and assume all responsibility for product acceptability and fitness for specific applications. As always, COXREELS technical assistance and support is available for your convenience.



WARNING - USER RESPONSIBILITIES

The customer, installer, and end users shall, through analysis and testing, assume sole responsibility in making the final selection of reels and accessories. Furthermore, these parties shall hold COXREELS harmless for all liability, claims, suits, and expenses incurred. These parties shall ensure training, performance, endurance, routine inspections, maintenance, safety precautions and warnings regarding the application are enforced at all times. COXREELS is not responsible for use of products in excess of rated and recommended capacities, design functions, or abnormal conditions.



CAUTION - PROPER SELECTION OF ACCESSORIES

Coxreels offers a wide variety of accessory items and optional features for its reels. It is the sole responsibility of the customer, installer, and end users to ensure that the proper items and features have been selected to fit the application. Consult with Coxreels technical support for available accessories and optional features which will help you to keep your product safe in its environment. These items may include mounting brackets, guards, guides, and electrical components.



WARNING - FOLLOW INSTRUCTIONS

The customer, installer, and end users shall ensure that all potential users of these products receive continual training and access to all relevant product manuals and safety instructions. This information should be thoroughly reviewed prior to installation, stored and reviewed continually during use of the product. Coxreels assumes no responsibility for fitness of installation

and continued use in specific applications. Any overhead installations should be such that the reel is not supported solely by bolts under tension. A safety chain or cable is necessary to eliminate potential for damage or personal injury.



IMPORTANT - FOLLOW GOOD MAINTENANCE PRACTICES

When receiving your products, establish a program for inspection, testing, and periodic replacement of worn items depending on factors such as; severity of application, frequency of equipment use, and past performance indicators. Use only properly trained persons to perform these duties. Update training periodically. Document the maintenance, inspections, and testing of products. Never allow an improperly functioning reel or accessory product to be put into use.

Documented inspections shall include in part, pressurized units, swivel joints, hose, hose fittings, cable, mounting hardware, roller guides and any such moving parts. Never allow the use of hoses or cables other than what is intended in the design of the reel. Changes in diameter, weight, length, or flexibility can affect the function and may cause damage or personal injury. Consult specific product manuals, or factory, with any questions regarding proper maintenance practices.

The use of any replacement components other than those provided by Coxreels is prohibited. Coxreels shall be held harmless from any improper selection of such components which may affect function and overall safety of the product.

NOTE: All designs, specifications, and dimensional data contained in this book are subject to change without notice. No additional warranties, express or implied, including warranties of merchantability for fitness for a particular purpose, are created by the descriptions and depictions of the products on in this book.



PROP 65

In compliance of California's Proposition 65, Coxreels will be applying warning labels to all applicable products with regard to chemicals known to the state of California to cause cancer or reproductive harm.

All reels will carry the following warning.

Parts and components will carry warning labels relative to the respective materials used.

For more information see <http://www.coxreels.com/prop65.html>



WARNING

This product can expose you to chemicals including nickel, which are known to the State of California to cause cancer, and chemicals including chromium, which are known to the State of California to cause birth defects or other reproductive harm.

For more information: www.P65Warnings.ca.gov/product



INDUSTRY CATALOGS



PRODUCT CATALOGS



100 years
Coxreels
 USA made since 1923

CORPORATE HEADQUARTERS:

Tempe, Arizona USA
 P: 480.820.6396 F: 480.820.5132
 Toll Free: 800.COX.REEL
www.coxreels.com info@coxreels.com

INTERNATIONAL:

EUROPE / MIDDLE EAST / AFRICA
 P: +44 (0) 1536 464 990
 F: +44 (0) 1536 464 999
www.crireels.com sales@crireels.com

