

**COXREELS® EZ-EN Series** "Enclosed" spring driven hose reels are protected by a powder coated steel casing that shields out the elements to protect and extend the life of the reel, the hose, and the components inside. This series adds a neat, tidy, aesthetic appearance to work environments that demand a clean and professional look. The three piece casing is easy to assemble and disassemble for simple installation and maintenance.

**EZ-EN SERIES**

Do not exceed listed hose O.D. to obtain maximum length.

HOSE						LESS HOSE		SIZE INDEX
MODEL	I.D.	O.D.	FT.	PSI	APRX. LBS.	MODEL	APRX. LBS.	
<b>LOW PRESSURE</b> Models with hose are for air water service with a maximum temperature 150°F. Models less hose can be used for air, water or oil.								
EZ-EN-325	3/8"	5/8"	25	300	49	ENL-N-325	46	1
EZ-EN-350	3/8"	5/8"	50	300	65	ENL-N-350	58	2
EZ-EN-425	1/2"	3/4"	25	300	63	ENL-N-425	58	1
EZ-EN-450	1/2"	3/4"	50	300	69	ENL-N-450	64	2
<b>MEDIUM PRESSURE</b> Reels are furnished with standard one wire braid hose suitable for air, water or oil applications. Hose exceeds SAE R1 specifications. Maximum Temperature 250°F.								
EZ-ENM-325	3/8"	1 1/16"	25	3,000	61	ENML-N-325	54	1
EZ-ENM-350	3/8"	1 1/16"	50	3,000	80	ENML-N-350	68	2
EZ-ENM-425	1/2"	1 3/16"	25	2,500	61	ENML-N-425	54	1
EZ-ENM-450	1/2"	1 3/16"	50	2,500	82	ENML-N-450	68	2
<b>HIGH PRESSURE</b> Reels are furnished standard with S.A.E. 100R16 #1 or #2 wire braid hose suitable for grease and hydraulic oil applications. Maximum Temperature 250°F.								
EZ-ENH-125	1/4"	9/16"	25	5,000	60	ENHL-N-125	54	1
EZ-ENH-150	1/4"	9/16"	50	5,000	79	ENHL-N-150	68	2
EZ-ENH-350	3/8"	1 1/16"	50	4,000	80	ENHL-N-350	68	2



**EZ-EN SERIES :: REEL SPECIFICATIONS**

**SWIVEL**

- Machined from solid brass 90° full-flow NPT swivel inlet (Zinc plated steel swivel on HP models)

- Swivel Seals: NITRILE

**DESIGN & STRUCTURE**

- Sturdy, enclosed reel for aesthetic purposes & greater hose protection
- Models with size index #2 feature Coxreels' exclusive Super Hub™ dual axle support system
- Solid, one piece, heavy gauge 1/4" steel base & support post for maximum stability
- 1" solid steel axle & lubricated precision bearings for smooth rotation
- Heavy gauge steel 3-piece casing with adjustable hose roller guide

**EZ-COIL RETRACTION**

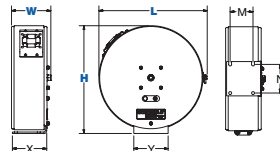
- OUR PATENTED SAFETY SYSTEM THAT RETRACTS UP TO 80% SLOWER THAN CONVENTIONAL SPRING DRIVEN REELS
- Enclosed factory tuned & matched cartridge-style spring motor
- Non corrosive, stainless steel spring, pawl, & zinc plated ratchet
- Multi-position lock ratchet mechanism secures hose at desired length

**REEL DIMENSIONS**

Technical Data Sheets Available On Website

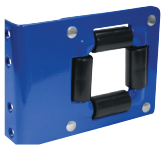
SIZE INDEX	W	H	L	X	Y	M	N
1	6 7/8"	18 7/8"	19"	6"	6"	4"	5"
2	8 1/2"	21 3/4"	21 7/8"	6"	6"	4"	5"

Overall Dimensions Base Mounting Pattern



**TOP REQUESTED UPGRADES & ACCESSORIES**

SEE PAGE 17 FOR ADDITIONAL ACCESSORIES



**UPGRADE TO SOLID ROLLERS**

Heavy duty machined from solid plastic rollers. Only for T Series models 3/8" and 1/2".

**UPGRADE TO NITRILE OR RUBBER HOSE**

**NITRILE HOSE:** Premium high quality, oil resistant, multi-purpose hose. The high tensile spiral synthetic yarn reinforcement provides excellent kink resistance. Temperature range: -20° F to +212° F.

**SYNTHETIC RUBBER HOSE:** Versatile general purpose hose. The synthetic rubber tube and cover resists heat, sunlight, ozone, and weathering. Temperature range -40° F to +212° F.

**UPGRADE TO STAINLESS STEEL SWIVEL**

Based on the upgraded medium pressure swivel, the stainless steel swivel is machined from solid 316 stainless steel and features increased wall thicknesses with upgraded seals and backup rings.



**ADD AIR TOOL KIT**

**BEND RESTRICTOR:** Designed to limit the degree of bending without compromising the integrity of the hose assembly while also preventing the hose-end from kinking, excessive wearing, and tearing. Available for low pressure models.

**QUICK DISCONNECT:** Quick disconnect couplings tread onto end of hose fitting to provide fast, leak-proof connections for low pressure hose lines.



**ADD BEND RESTRICTOR**

Designed to limit the degree of bending without compromising the integrity of the hose assembly while also preventing the hose-end from kinking, excessive wearing, and tearing. Available for low pressure models



**WARNING:** Cancer and reproductive Harm – See page 19 for more information – www.P65Warning.ca.gov