



OUR MISSION

WE WILL LEAD THE INDUSTRY IN QUALITY & INNOVATION

We know that there can be no compromise when you live the philosophy of building the best! Every decision regarding our product design is made with one unwavering goal...

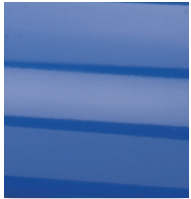


TO MAKE THE REQUIRED PRODUCT THE VERY BEST IT CAN BE.

YOUR REEL SOURCE



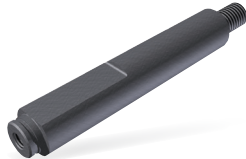
A HIGHER LEVEL OF STANDARDS



CPCT™ POWDER COAT
Our blue powder coat finish is long lasting, chip resistant & rust inhibiting



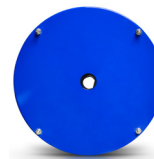
BRASS SWIVEL
External fluid path, machined from solid brass, full flow, swivel for simple seal maintenance



STEEL AXLE
1" solid steel axle & lubricated bearings for extra strength & durability. Not a hollow tube & no fluid travels through it



CNC SPUN DISCS
All steel rolled edges & ribbed discs for added safety, strength & durability



CARTRIDGE MOTOR
Enclosed factory tuned & matched cartridge style motor for safe & easy replacement



EZ-COIL® SERIES
A patented safety system that retracts up to 80% slower than conventional reels



SPRING DRIVEN REELS OVERVIEW

	MATERIAL	LENGTH	MAX
GENERAL:	HOSE I.D. 1/4" - 1 1/2"	15' - 100'	300 - 5,000 PSI
FUEL:	HOSE I.D. 1/2" - 1"	25' - 75'	300 PSI
WELDING HOSE:	HOSE I.D. 1/4"	25' - 100'	200 PSI
WELDING CABLE:	CABLE GA: #6 - #2/0	25' - 50'	75 AMPS - 450 AMPS

	MATERIAL	LENGTH	MAX
ELECTRICAL:	CORD GA: 10 - 16 GA	30' - 100'	13 - 35 AMPS
STATIC DISCHARGE:	CABLE SIZE: 5/32"	35' - 100'	50 - 100 AMPS
VACUUM:	HOSE I.D. 1 1/2"	25'	29" HG

! WARNING: Cancer and reproductive Harm - See page 63 for more information - www.P65Warning.ca.gov

